

Reduce limescale naturally

MT-X8 fitted to **WATER SYSTEMS** ...can

- ☑ Inhibit limescale
- ☑ Remove existing scale
- ☑ Reduce heating costs
- ☑ Extend the life of plumbing & appliances
- ☑ Keep shower heads clean
- ☑ Keep sinks and bath surfaces clean



Used on all types of domestic, commercial and industrial equipment involving the use of water (Water heating, spraying equipment, horticulture, agriculture, beerlines)

A single conditioner is usually adequate for the average house. Some larger properties may require two units.

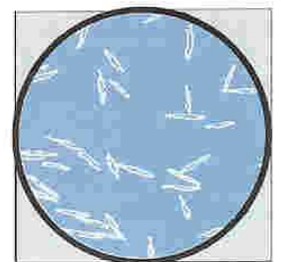
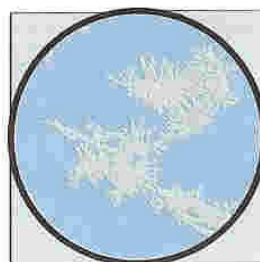
The conditioner is fitted to the incoming water supply before any offtakes.

How does it work on water?

Untreated hard water (left) containing CaCO_3 . The crystals form in large clumps in plumbing and equipment, forming a dense insulating material that reduces efficiency and is costly to control or remove.

In water treated by the unit (right) the Crystals do not adhere to plumbing or equipment and pass harmlessly through.

Magnetic Conditioners are also fitted to the water circulation systems in swimming pools and fish farms etc to maintain the pH levels, reducing the need for expensive and environmentally harmful chemical treatment.



Samples of untreated water (left) and water treated by magnetic conditioning (right), allowed to evaporate and magnified 900x

**Simple to install - no need to cut existing pipework - transferable
- no moving parts - no power required - no maintenance**

10 year parts & labour guarantee

REDUCE SCALE – PROTECT EQUIPMENT – IMPROVE HEAT EXCHANGE

